

# MAYER CHINA

Beaver Falls, Pennsylvania

PAGE 1

[Click here to return to Mayer China IDwiki.](#)



Early J.&E. Mayer mark  
Estimated to be early: circa  
1881 - early 1900



J.&E. Mayer  
1890s - circa 1900  
(1880s - circa 1900 without  
date code)



J.&E. Mayer  
Circa 1890s - circa 1912



Incised mark is unknown.  
The Wright, Tyndale and  
Van Roden distributor mark  
would probably date between  
1902 (when the first Horn &  
Hardart opened) and circa  
1928, when the distributor  
went out of business.



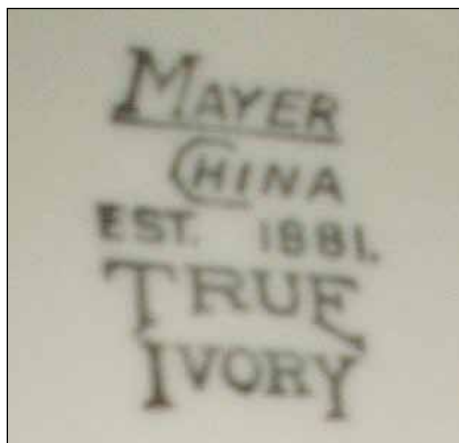
Mayan Ware  
1930s - early 1940s



True Ivory  
Circa 1930s



Circa 1912 - circa 1930s



True Ivory  
1930s - 1940s



True Ivory, Wiltshire Pattern  
1930s - early 1950s

# MAYER CHINA

Beaver Falls, Pennsylvania

[Click here to return to Mayer China IDwiki.](#)



Ivory, 1940s - 1960s  
(with date code, 1955)



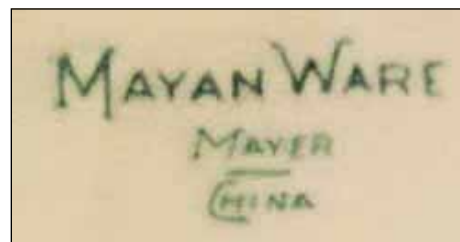
Arlane Pattern  
1930s - early 1940s



Blossom Hill Pattern  
1940s - 1950s



Elbe Pattern  
1930s - early 1940s



Mayan Ware  
1930s-1950s



1930s - early 1940s



Estimated pre-1950s



NaroRim  
1930s to 1950



Albion Pattern  
Estimated circa 1950s

# MAYER CHINA

Beaver Falls, Pennsylvania

[Click here to return to Mayer China IDwiki.](#)



Carmel Pattern  
1940s - 1950s



Rosedale Pattern  
Second quarter 1954



1940s - 1960s  
(with this date code, 1961)



Tropic Pattern  
Circa 1950s  
(with date code, 1955)



Interpace - 1968-1978  
(with this date code, 1972)



Interpace - 1968-1978  
(with this date code, 1977)



Sculptura - circa 1970-1978  
(with this date code, 1970)



Circa 1960s - 1980s  
(with this date code, 1963)



Circa 1989 - end of service