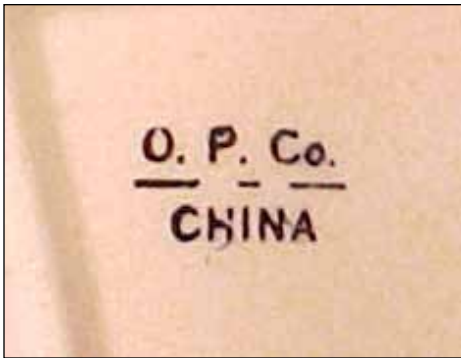


# SYRACUSE CHINA

Syracuse, New York

Return to Syracuse China IDwiki:

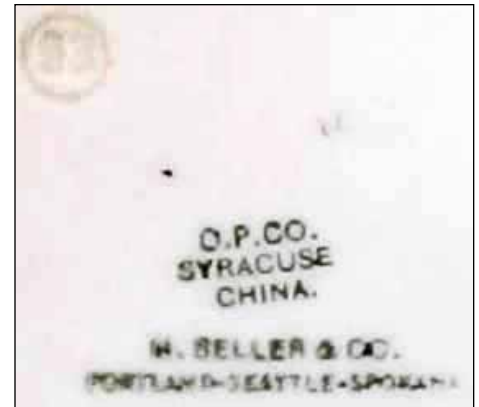
<http://www.restaurantwarecollectors.com/forums/showwiki.php?title=Syracuse>



O.P.CO. 1885 - 1890



O.P.CO. 1893 - 1897



O.P.CO. 1897-1946  
With number 93 in circle: 1911



O.P.CO.: 1897-1946  
With number 13 in circle: 1904



O.P.CO.: 1897-1946  
With date code: 1925



O.P.CO.: 1897-1946  
With date code: 1926



O.P.CO.: 1897-1946  
With date code: 1925



With number in diamond: ~  
1912 to 1919. This one, with an  
impressed 40, would date to  
1915.



O.P.CO.: 1897-1946  
With date code: 1923



O.P.CO.: 1897-1946  
With date code: 1925



O.P.CO.: 1897-1946  
With date code: 1937



O.P.CO.: 1897-1946  
With date code: 1942



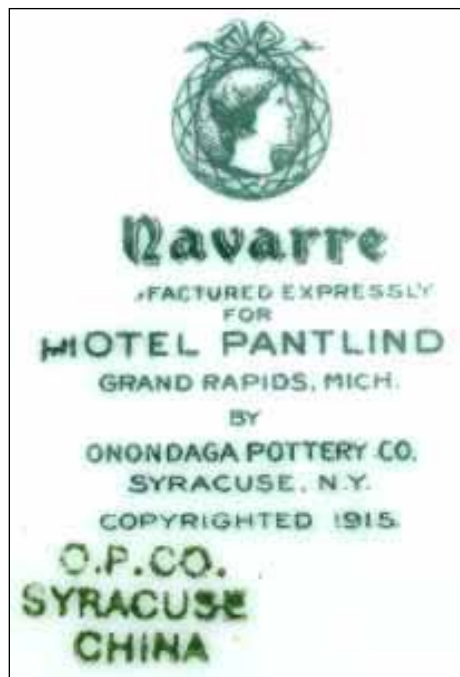
O.P.CO.: 1897-1946  
With date code: 1945



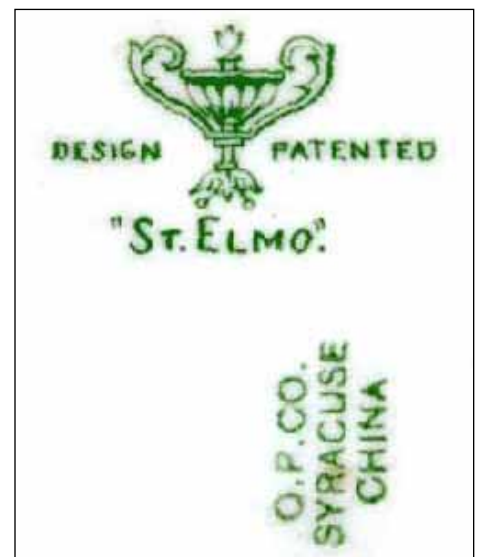
O.P.CO.: 1897-1946  
With date code: 1945



O.P.CO.: 1897-1946



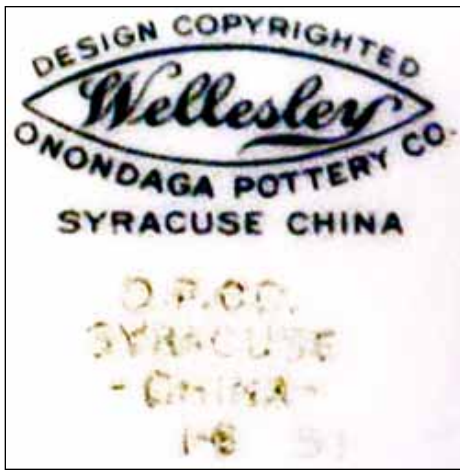
O.P.CO.: 1897-1946



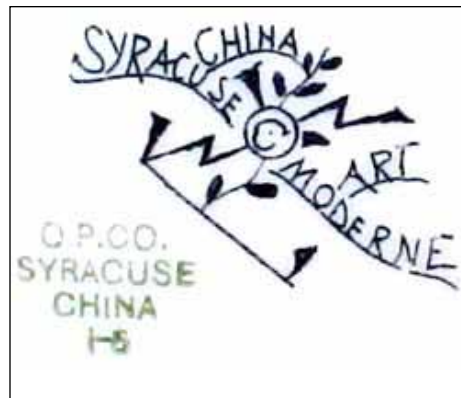
O.P.CO.: 1897-1946



O.P.CO.: 1897-1946



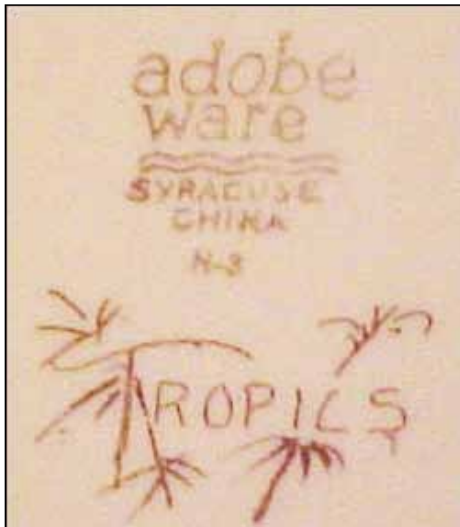
O.P.CO.: 1897-1946  
With date code: 1943



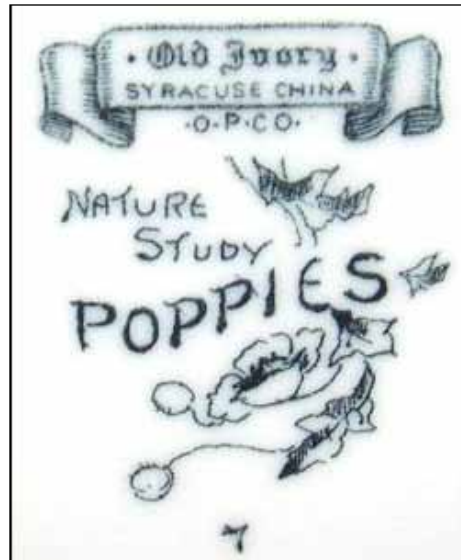
O.P.CO.: 1897-1946  
With date code: 1928  
Art Moderne



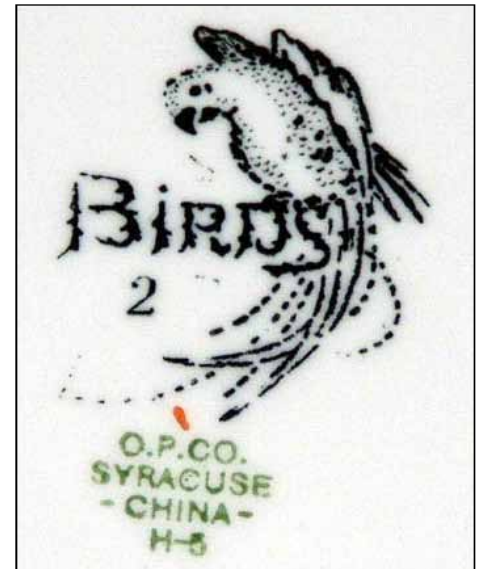
O.P.CO.: 1897-1946  
With date code: 1929  
Fruit Moderne



Tan body  
Adobe Ware: 1932 - 1972  
with date code: 1933  
Tropics



Old Ivory: 1927 - 1950s  
Nature Studies: Poppies  
Hand-painted,  
designed by Harry Aitken



O.P.CO.: 1897-1946  
Nature Studies: Birds  
Hand-painted,  
designed by Harry Aitken  
With date code, 1927





Old Ivory describes the ivory-colored clay body  
1927 - 1950s  
usually includes no date code



Old Ivory describes the ivory-colored clay body  
1927 - 1950s  
usually includes no date code



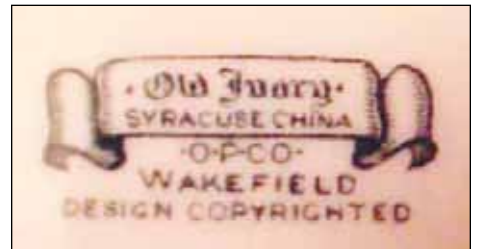
Old Ivory describes the ivory-colored clay body  
1927 - 1950s  
usually includes no date code



Old Ivory describes the ivory-colored clay body  
1927 - 1950s  
usually includes no date code



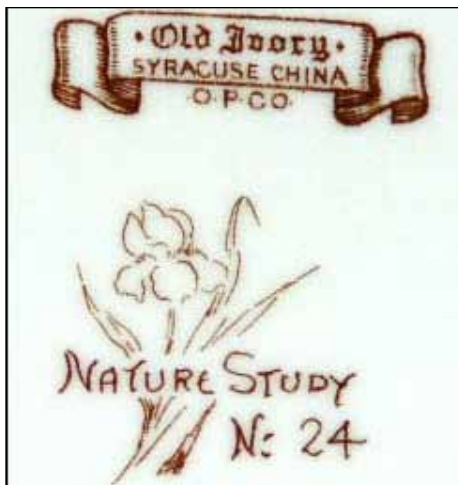
Old Ivory describes the ivory-colored clay body  
1927 - 1950s  
usually includes no date code



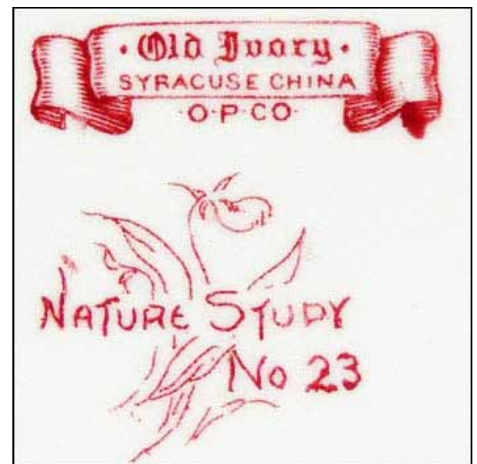
Old Ivory describes the ivory-colored clay body  
1927 - 1950s  
usually includes no date code



Old Ivory describes the ivory-colored clay body  
1927 - 1950s  
usually includes no date code



Old Ivory: 1927 - 1950s  
Nature Studies  
Hand-painted,  
designed by Harry Aitken



Old Ivory: 1927 - 1950s  
Nature Studies  
Hand-painted,  
designed by Harry Aitken



1933-1967

Designed with narrow rim for use by railroads, among others



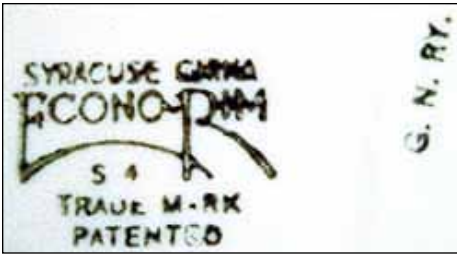
1933-1967

Designed with narrow rim for use by railroads, among others



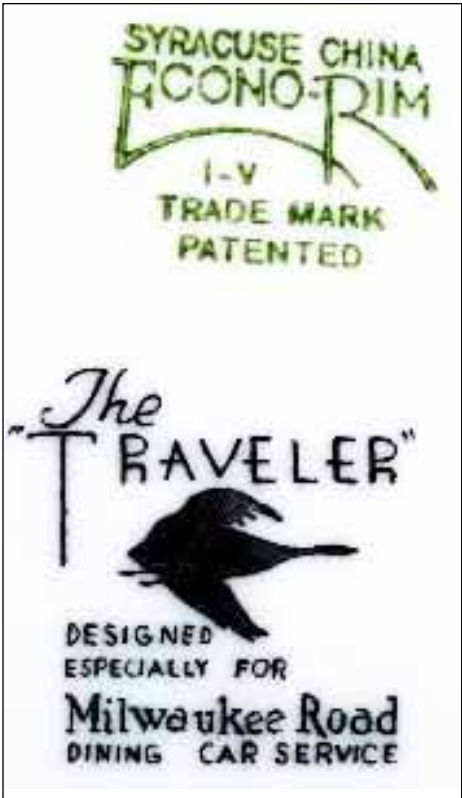
1933-1967

Designed with narrow rim for use by railroads, among others



1933-1967

Designed with narrow rim for use by railroads, among others  
With date code, 1935



1933-1967

Designed with narrow rim for use by railroads, among others  
With date code, 1941



1946-1962 also 1965-1974  
with date code: 1957



1946-1962 also 1965-1974  
with date code: 1952



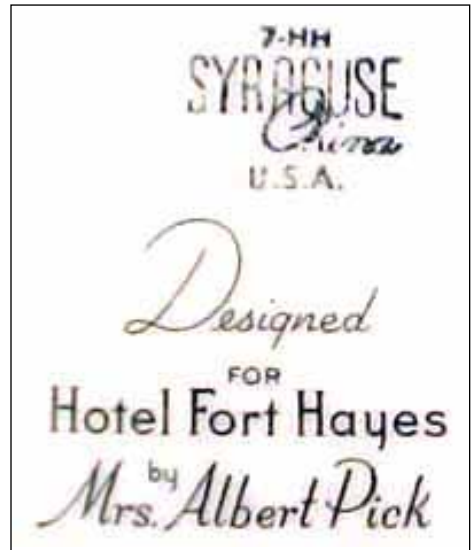
1946-1962 also 1965-1974  
(date code unreadable)



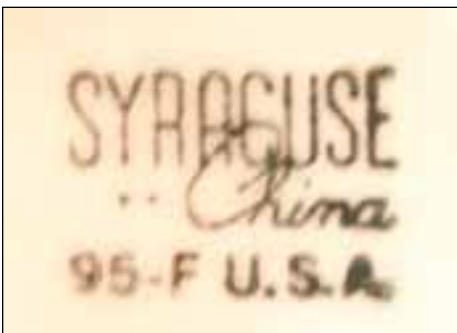
1962-1965  
(with date code: 1962)



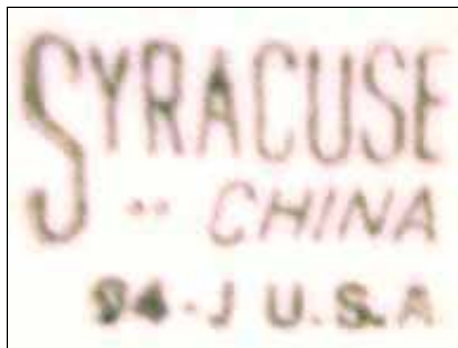
1946-1962 also 1965-1974  
(with date code: 1947)



1946-1962 also 1965-1974  
(with date code: 1953)



1946-1962 also 1965-1974  
(with date code: 1966)

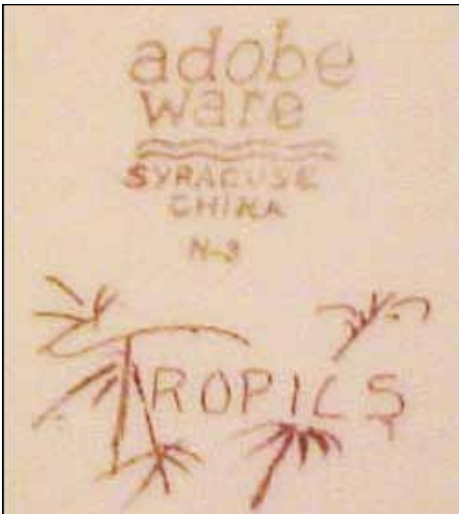


1962-1965  
(with date code: 1965)



1946-1962 also 1965-1974  
?????????





Tan body  
Adobe Ware: 1932 - 1972  
with date code: 1933



Tan body  
Adobe Ware: 1932 - 1972  
with date code: 1946



1961-1962  
with date code: 1962



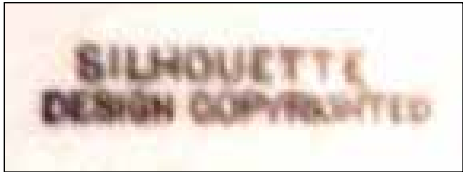
Nature Studies  
2008



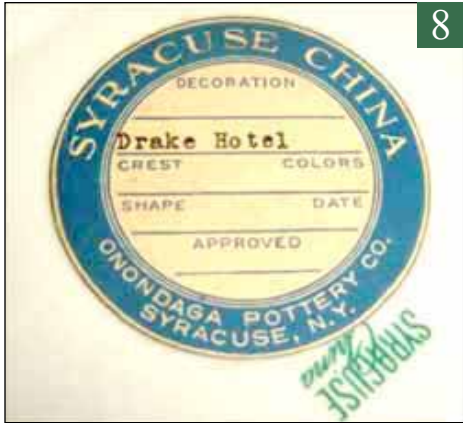
?????



1991



1929  
ordered for Milwaukee Road RR



Drake Hotel  
date unknown



1993-1997



2009  
This is literally the last datecode for ware made by Syracuse in the United States.



1890-1893  
This is one of Syracuse China's oldest backstamps and was found on a Knight's Templar plate.